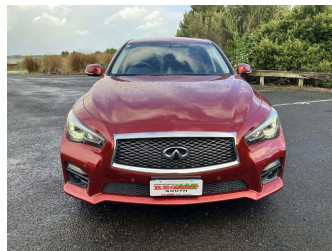


2016 Nissan Skyline 200GT



Purchase Price

\$15,990

Includes GST, Registration & Licensing

Finance may be available on this vehicle. Ask one of our friendly staff for more information.



Gain peace of mind with Mechanical Breakdown Insurance. **Ask us how.**



Top features

- » 2 Air Bags
- » ABS Braking
- » Air Con
- » Alloy Wheels
- » ESC
- » Fog Lamps
- » HID Lighting
- » Indicator Mirror
- » Keyless Entry
- » Keyless Start
- » Power Mirrors
- » Power Steering
- » Push Button Start
- » Radio
- » Retractable Mirrors
- » Smart Key
- » Tinted Windows

Body Style

4 door, Sedan

Odometer

170,934 km

Engine

2000 cc, Internal Combustion

Fuel Type

-

Transmission

Automatic, Rear Wheel

Wheels

-

VIN

7AT0DH12X24550162

Interior

Black

Safety



Based on 2025 VSRR rating

Reg No.

RPL720

Ext Colour

Red

History

Ex-Overseas

Seats

5 seats, Leather

CO2 Emissions

★★★★☆☆

198 grams/km

Energy Economy

★★★★☆☆

**Annual fuel cost of \$3,330
8.5L per 100km**

Cost per year is an estimate based on petrol price of \$2.80 per litre and an average distance of 14000 km. Emissions and Energy Economy figures standardised to 3P WLTP.

Stock ID: 47161



Regent Car Court | Phone Sean 0276122217 - Natasha 0275363732 | Email
sales@regentcars.co.nz
100 & 167 Clyde Street, Invercargill 9810, New Zealand
www.regentcars.co.nz

