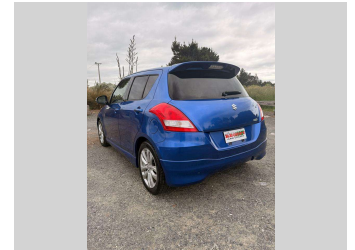
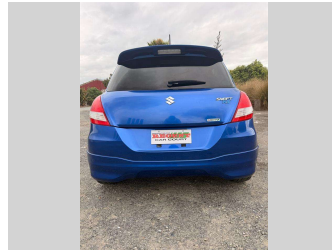
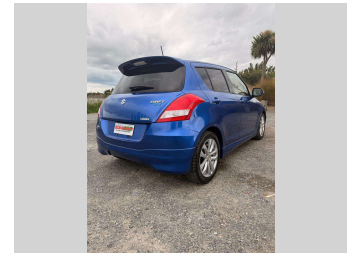
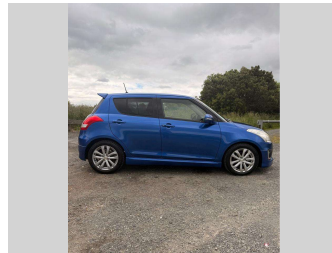
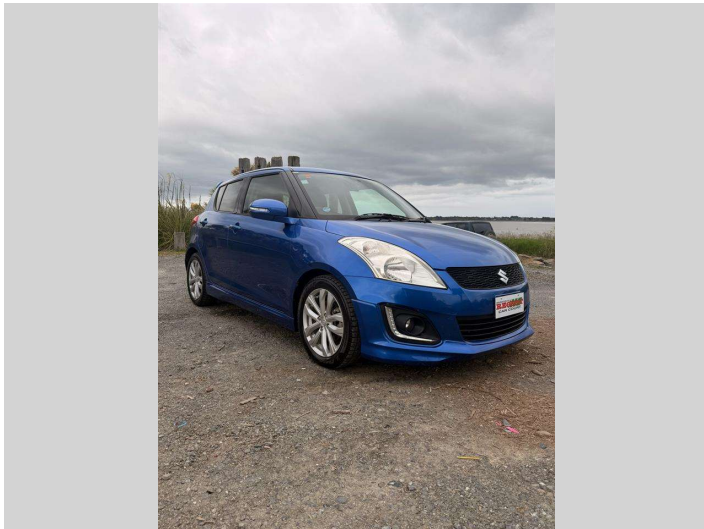


# 2016 Suzuki Swift RS-DJE



## Purchase Price

Includes GST, Registration & Licensing

# \$13,990

Finance may be available on this vehicle. Ask one of our friendly staff for more information.



Gain peace of mind with Mechanical Breakdown Insurance. **Ask us how.**



## Top features

- » 3 Full Seat Belts In R...
- » 4 Air Bags
- » ABS Braking
- » Air Con
- » Alloy Wheels
- » Audio Control Steering...
- » Cam Chain
- » CD Player
- » Child Seat Anchor Poin...
- » Cruise Control
- » Electronic Stability C...
- » Idling Stop
- » Indicator Mirror
- » ISOFIX Child Seat Anch...
- » Keyless Entry
- » Keyless Start
- » Smart Key
- » Split Fold Down Rear S...

Body Style

**5 door, Hatchback**

Odometer

**118,569 km**

Engine

**1200 cc, Internal Combustion**

Fuel Type

**Petrol**

Transmission

**Automatic, Front Wheel**

Wheels

-

VIN

**7AT0GK0CX25358644**

Interior

**Black**

Safety



Based on 2025 UCSR rating for 11-17 models

Reg No.

-

Ext Colour

**Blue**

History

-

Seats

**5 seats, Cloth/Leather**

CO2 Emissions

★★★★☆

**110 grams/km**

Energy Economy

★★★★☆☆

**Annual fuel cost of \$1,840  
4.7L per 100km**

Cost per year is an estimate based on petrol price of \$2.80 per litre and an average distance of 14000 km. Emissions and Energy Economy figures standardised to 3P WLTP.

**Stock ID: 47560**



Regent Car Court | Phone Sean 0276122217 - Natasha 0275363732 | Email [sales@regentcars.co.nz](mailto:sales@regentcars.co.nz)  
100 & 167 Clyde Street, Invercargill 9810, New Zealand  
[www.regentcars.co.nz](http://www.regentcars.co.nz)

