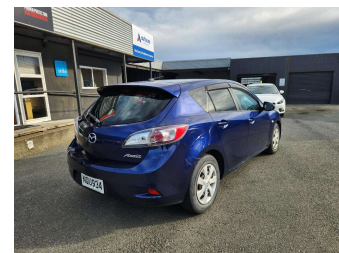
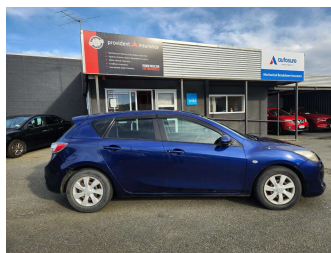


2011 Mazda Axela Sport



Purchase Price **\$9,990**
Includes GST, Registration & Licensing

Finance may be available on this vehicle. Ask one of our friendly staff for more information.



Gain peace of mind with Mechanical Breakdown Insurance. **Ask us how.**



Top features

- » 4 Air Bags
- » ABS Braking
- » Air Con
- » Indicator Mirror
- » Keyless Entry
- » Keyless Start
- » Power Mirrors
- » Power Steering
- » Push Button Start
- » Radio
- » Rear Wiper
- » Retractable Mirrors

Body Style
5 door, Hatchback

Odometer
125,944 km

Engine
1500 cc, Internal Combustion


Fuel Type
Petrol

Transmission
Automatic, Front Wheel

Wheels
-

VIN
7AT0C13JX21201000

Interior
Black

Safety

Based on 2025 UCSR rating for 09-13 models

Reg No.
NQU934

Ext Colour
Blue

History
Ex-Overseas, 1 owner

Seats
5 seats, Cloth

CO2 Emissions
★★★★☆
174 grams/km


Energy Economy
★★☆☆☆
Annual fuel cost of \$2,820
7.2L per 100km

Cost per year is an estimate based on petrol price of \$2.80 per litre and an average distance of 14000 km. Emissions and Energy Economy figures standardised to 3P WLTP.

Stock ID: 47720



Regent Car Court | Phone Sean 0276122217 - Natasha 0275363732 | Email sales@regentcars.co.nz
100 & 167 Clyde Street, Invercargill 9810, New Zealand
www.regentcars.co.nz



★★★★★
4.73 | 870 reviews