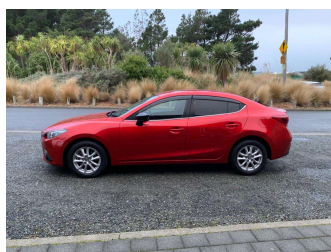


2013 Mazda Axela Hybrid-S



Purchase Price **\$12,990**
Includes GST, Registration & Licensing

Finance may be available on this vehicle. Ask one of our friendly staff for more information.



Gain peace of mind with Mechanical Breakdown Insurance. **Ask us how.**



Top features

- » 3 Full Seat Belts In R...
- » 8 Air Bags
- » ABS Braking
- » Alloy Wheels
- » Auto Air Conditioning
- » Auto Head Light System
- » Cam Chain
- » CD Player
- » Child Seat Anchor Poin...
- » Electronic Stability C...
- » ISOFIX Child Seat Anch...
- » Keyless Entry
- » Keyless Start
- » Remote Central Locking
- » Steering controls

Body Style
4 door, Sedan

Odometer
188,596 km

Engine
2000 cc, Hybrid


Fuel Type
Petrol

Transmission
Automatic, Front Wheel

Wheels
-

VIN
7AT0C13JX24101775

Interior
Black

Safety

Based on 2025 UCSR rating for 13-19 models

Reg No.
RTD522

Ext Colour
Red

History
Ex-Overseas

Seats
5 seats, Cloth

CO2 Emissions
★★★★☆
97 grams/km


Energy Economy
★★★★☆☆
Annual fuel cost of \$1,610
4.1L per 100km

Cost per year is an estimate based on petrol price of \$2.80 per litre and an average distance of 14000 km. Emissions and Energy Economy figures standardised to 3P WLTP.

Stock ID: 47243



Regent Car Court | Phone Sean 0276122217 - Natasha 0275363732 | Email sales@regentcars.co.nz
100 & 167 Clyde Street, Invercargill 9810, New Zealand
www.regentcars.co.nz



★★★★★
4.73 | 868 reviews