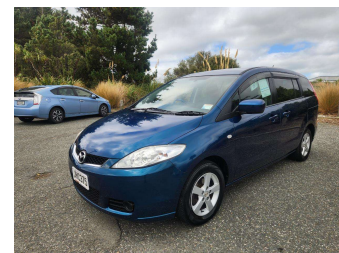


2006 Mazda Premacy 20S 7 Seater



Purchase Price **\$6,990**
Includes GST, Registration & Licensing

Finance may be available on this vehicle. Ask one of our friendly staff for more information.



Gain peace of mind with Mechanical Breakdown Insurance. **Ask us how.**



Top features

- » 2 Air Bags
- » ABS Braking
- » Air Con
- » Alloy Wheels
- » Power Mirrors
- » Power Steering
- » Rear Wiper
- » Retractable Mirrors

Body Style
5 door, Van

Odometer
141,846 km

Engine
2000 cc, Internal Combustion


Fuel Type
Petrol

Transmission
Automatic, Front Wheel

Wheels
-

VIN
7AT0C133X15150619

Interior
Black

Safety

Based on 2025 VSRR rating

Reg No.
JHC375

Ext Colour
Blue

History
Ex-Overseas, 1 owner

Seats
7 seats

CO2 Emissions
★★★★☆☆
199 grams/km


Energy Economy
★★☆☆☆☆
Annual fuel cost of \$3,250
8.3L per 100km

Cost per year is an estimate based on petrol price of \$2.80 per litre and an average distance of 14000 km. Emissions and Energy Economy figures standardised to 3P WLTP.

Stock ID: 47615



Regent Car Court | Phone Sean 0276122217 - Natasha 0275363732 | Email sales@regentcars.co.nz
100 & 167 Clyde Street, Invercargill 9810, New Zealand
www.regentcars.co.nz



★★★★★
4.73 | 859 reviews