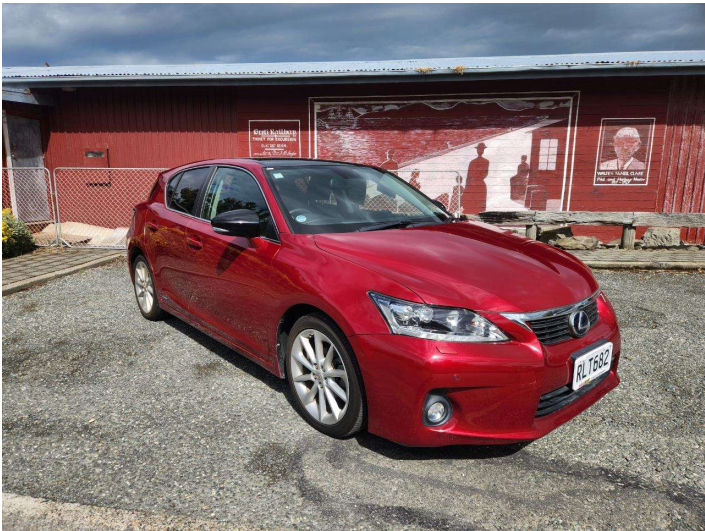


2011 Lexus CT 200h Hybrid



Purchase Price

\$12,990

Includes GST, Registration & Licensing

Finance may be available on this vehicle. Ask one of our friendly staff for more information.



Gain peace of mind with Mechanical Breakdown Insurance. **Ask us how.**



Top features

- » 6 Air Bags
- » ABS Braking
- » Air Con
- » Alloy Wheels
- » CD Player
- » Child Seat Anchor Poin...
- » Cruise Control
- » ESC
- » Fog Lamps
- » Indicator Mirror
- » ISOFIX Child Seat Anch...
- » Keyless Entry
- » Keyless Start
- » Paddle Shift
- » Parking Sensors
- » Power Mirrors
- » Power Steering
- » Push Button Start

Body Style

5 door, Hatchback

Odometer

142,597 km

Engine

1800 cc, Hybrid

Fuel Type

Hybrid

Transmission

Automatic

Wheels

17", Alloy

VIN

7AT0B010X23016545

Interior

Black

Safety



Based on 2024 VSRR rating

Reg No.

RLT682

Ext Colour

Wine

History

Ex-Overseas

Seats

5 seats, Leather

CO2 Emissions

★★★★☆

109 grams/km

Energy Economy

★★★★☆☆

**Annual fuel cost of \$1,840
4.7L per 100km**

Cost per year is an estimate based on petrol price of \$2.80 per litre and an average distance of 14000 km. Emissions and Energy Economy figures standardised to 3P WLTP.

Stock ID: 47010



Regent Car Court | Phone Sean 0276122217 - Natasha 0275363732 | Email sales@regentcars.co.nz
100 & 167 Clyde Street, Invercargill 9810, New Zealand
www.regentcars.co.nz

