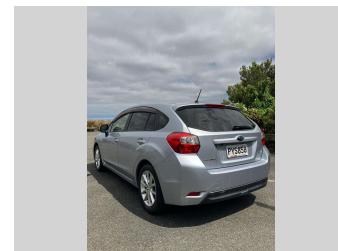
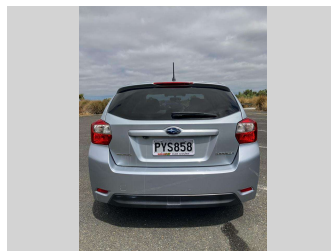
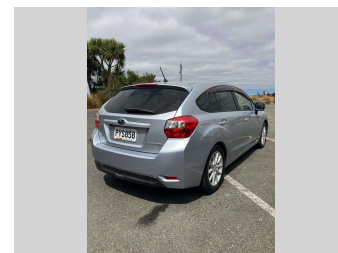
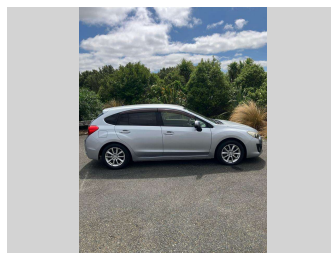
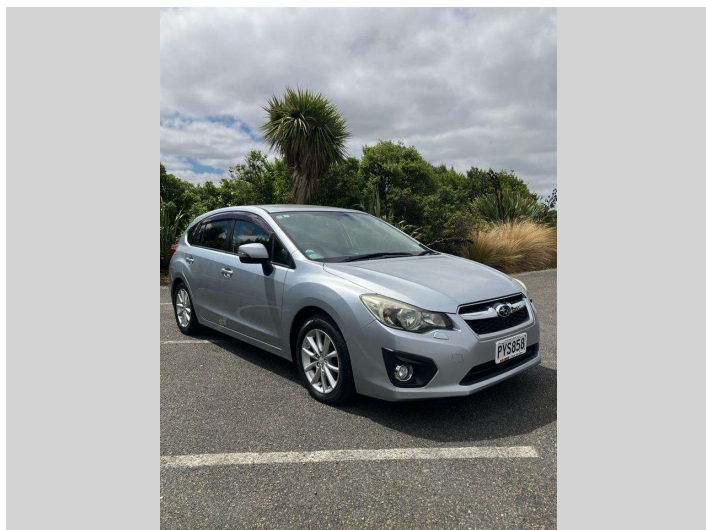



# 2012 Subaru Impreza 2.0I-S



**Purchase Price** **\$13,990**  
Includes GST, Registration & Licensing

Finance may be available on this vehicle. Ask one of our friendly staff for more information.



Gain peace of mind with Mechanical Breakdown Insurance. **Ask us how.**



- Top features**
- » 3 Full Seat Belts In Rear
  - » 4WD
  - » 6 Air Bags
  - » ABS Braking
  - » Alloy Wheels
  - » Cam Chain
  - » Electronic Stability Control
  - » Remote Central Locking
  - » Split Fold Down Rear Seats

Body Style  
**5 door, Hatchback**

Odometer  
**118,117 km**

Engine  
**2000 cc, Internal Combustion**

Fuel Type  
**Petrol**

Transmission  
**Automatic, Front Wheel**

Wheels  
-

VIN  
**7AT0GF09X23011413**

Interior  
**Black**

Safety



Based on 2025 UCSR rating for 12-16 models

Reg No.  
**PYS858**

Ext Colour  
**Silver**

History  
**Ex-Overseas, 2 owners**

Seats  
**5 seats, Cloth/Leather**

CO2 Emissions  
**★★★★☆**  
**163 grams/km**

Energy Economy  
**★★☆☆☆**

**Annual fuel cost of \$2,740**  
**7L per 100km**

Cost per year is an estimate based on petrol price of \$2.80 per litre and an average distance of 14000 km. Emissions and Energy Economy figures standardised to 3P WLTP.

**Stock ID: 47609**



Regent Car Court | Phone Sean 0276122217 - Natasha 0275363732 | Email sales@regentcars.co.nz  
100 & 167 Clyde Street, Invercargill 9810, New Zealand  
www.regentcars.co.nz

