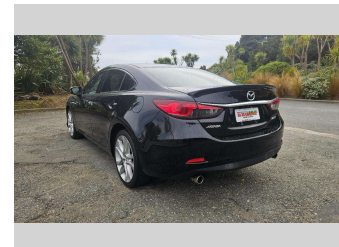
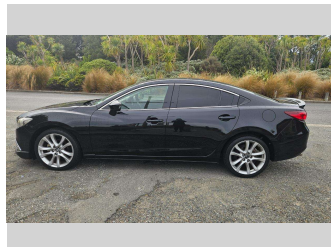
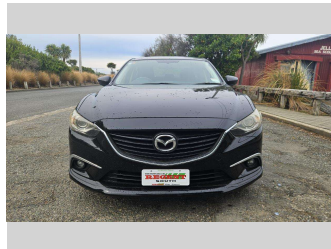


2011 Mazda Atenza 20S



Purchase Price **\$13,990**
Includes GST, Registration & Licensing

Finance may be available on this vehicle. Ask one of our friendly staff for more information.



Gain peace of mind with Mechanical Breakdown Insurance. **Ask us how.**



Top features

- » 2 Air Bags
- » ABS Braking
- » Air Con
- » Alloy Wheels
- » ESC
- » Fog Lamps
- » Keyless Entry
- » Keyless Start
- » Power Mirrors
- » Power Steering
- » Push Button Start
- » Radio
- » Rear Spoiler
- » Remote Key
- » Retractable Mirrors
- » Tinted Windows

Body Style
4 door, Sedan

Odometer
162,000 km

Engine
2000 cc, Internal Combustion

Fuel Type
Petrol

Transmission
Automatic, Front Wheel

Wheels
-

VIN
7AT0C139X25100198

Interior
Black

Safety



Based on 2025 UCSR rating for 12-23 models

Reg No.
-

Ext Colour
Black

History
-

Seats
5 seats, Cloth

CO2 Emissions
★★★★☆
154 grams/km

Energy Economy
★★★★☆☆


Annual fuel cost of \$2,590
6.6L per 100km

Cost per year is an estimate based on petrol price of \$2.80 per litre and an average distance of 14000 km. Emissions and Energy Economy figures standardised to 3P WLTP.

Stock ID: 47539



Regent Car Court | Phone Sean 0276122217 - Natasha 0275363732 | Email sales@regentcars.co.nz
100 & 167 Clyde Street, Invercargill 9810, New Zealand
www.regentcars.co.nz



★★★★★
4.73 | 835 reviews