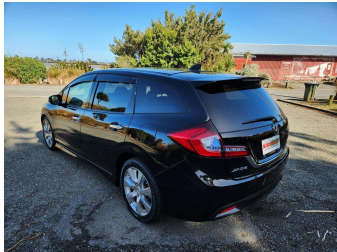
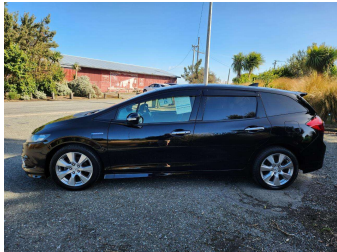
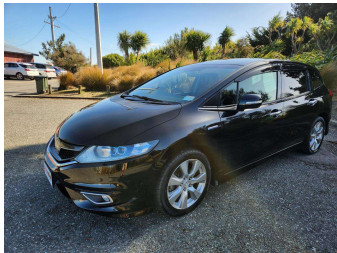
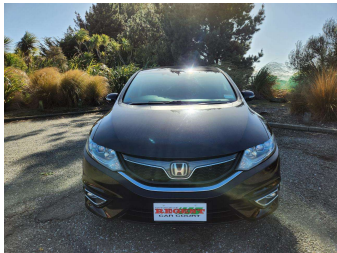


# 2015 Honda JADE HYBRID-X



### Purchase Price

Includes GST, Registration & Licensing

**\$15,990**

Finance may be available on this vehicle. Ask one of our friendly staff for more information.



Gain peace of mind with Mechanical Breakdown Insurance. **Ask us how.**



### Top features

- » 6 Seats
- » Fog Lamps
- » ABS Braking
- » Indicator Mirror
- » Air Con
- » Keyless Entry
- » Alloy Wheels
- » Keyless Start
- » Audio Control Steering...
- » Power Mirrors
- » Auto Lights
- » Power Steering
- » Bluetooth
- » Pre-crash Safety
- » CD Player
- » Radio
- » ESC
- » Rear Wiper

### Body Style

**5 door, Station Wagon**

### Odometer

**120,708 km**

### Engine

**1500 cc, Hybrid**

### Fuel Type

**Hybrid**

### Transmission

**Automatic, Front Wheel**

### Wheels

-

### VIN

**7AT08G9GX25007366**

### Interior

**Black**

### Safety



Based on 2024 VSRR rating

### Reg No.

-

### Ext Colour

**Black**

### History

**Ex-Overseas**

### Seats

**6 seats, Cloth**

### CO2 Emissions

★★★★★☆☆

**118 grams/km**

### Energy Economy

★★★★☆☆☆☆

**Annual fuel cost of \$1,960**

**5L per 100km**

Cost per year is an estimate based on petrol price of \$2.80 per litre and an average distance of 14000 km. Emissions and Energy Economy figures standardised to 3P WLTP.

**Stock ID: 47521**



Regent Car Court | Phone Sean 0276122217 - Natasha 0275363732 | Email [sales@regentcars.co.nz](mailto:sales@regentcars.co.nz)  
100 & 167 Clyde Street, Invercargill 9810, New Zealand  
[www.regentcars.co.nz](http://www.regentcars.co.nz)

