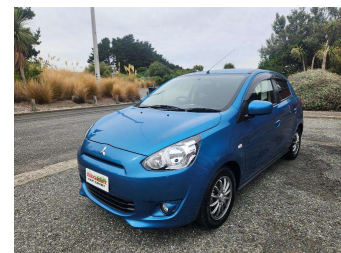



2015 Mitsubishi Mirage 1.2G



Purchase Price **\$11,990**
Includes GST, Registration & Licensing

Finance may be available on this vehicle. Ask one of our friendly staff for more information.



Gain peace of mind with Mechanical Breakdown Insurance. **Ask us how.**



Top features

- » 2 Air Bags
- » ABS Braking
- » Air Con
- » Alloy Wheels
- » ESC
- » Fog Lamps
- » Power Mirrors
- » Power Steering
- » Radio
- » Rear Wiper
- » Remote Central Locking
- » Remote Key
- » Retractable Mirrors
- » Tinted Windows

Body Style
5 door, Hatchback

Odometer
37,083 km

Engine
1000 cc, Internal Combustion


Fuel Type
Petrol

Transmission
Automatic

Wheels
-

VIN
7AT0CJ0AX24030878

Interior
Black

Safety

Based on 2023 UCSR rating for 12-20 models

Reg No.
-

Ext Colour
Blue

History
Ex-Overseas

Seats
5 seats, Cloth

CO2 Emissions
★★★★☆
107 grams/km


Energy Economy
★★★★☆
Annual fuel cost of \$1,800
4.6L per 100km

Cost per year is an estimate based on petrol price of \$2.80 per litre and an average distance of 14000 km. Emissions and Energy Economy figures standardised to 3P WLTP.

Stock ID: 47079



Regent Car Court | Phone 0276122217 | Email south@regentcars.co.nz
167-169 Clyde Street, Invercargill 9810, New Zealand
www.regentcars.co.nz



★★★★★
4.71 | 674 reviews