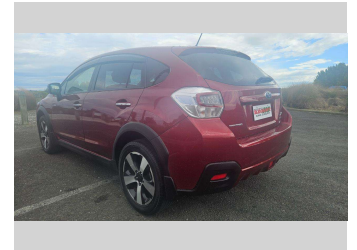
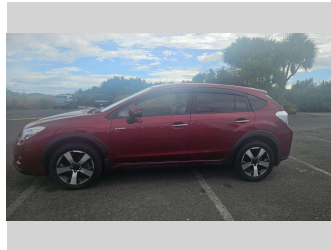
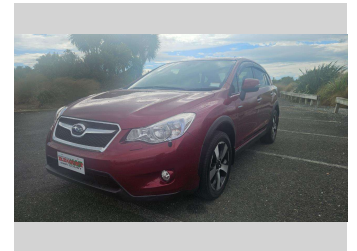
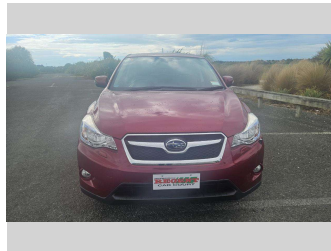


# 2013 Subaru XV HYBRID 2.0i-L EYESIGHT



**Purchase Price** **\$14,990**  
Includes GST, Registration & Licensing

Finance may be available on this vehicle. Ask one of our friendly staff for more information.



Gain peace of mind with Mechanical Breakdown Insurance. **Ask us how.**



**Top features**

- » 3 Full Seat Belts In R...
- » 8 Air Bags
- » Air Con
- » Auto Lights
- » Bluetooth
- » Cam Chain
- » CD Player
- » Cruise Control
- » Cruise Control
- » Electronic Stability C...
- » Indicator Mirror
- » ISOFIX Child Seat Anch...
- » Keyless Entry
- » Keyless Start
- » Paddle Shift
- » Pre-crash Safety
- » Radio
- » Remote Central Locking

Body Style  
**Station Wagon**

Odometer  
**101,232 km**

Engine  
**2000 cc, Hybrid**

Fuel Type  
**Hybrid**


Transmission  
**Automatic**

Wheels  
-

VIN  
**7AT0GF1XX25004232**

Interior  
**Black & White**

Safety



Based on 2024 UCSR rating for 12-16 models

Reg No.  
-

Ext Colour  
**Red**

History  
-

Seats  
**5 seats, Cloth/Leather**

CO2 Emissions  
**★★★★☆**  
**137 grams/km**


Energy Economy  
**★★★★☆☆**  
**Annual fuel cost of \$2,310**  
**5.9L per 100km**

Cost per year is an estimate based on petrol price of \$2.80 per litre and an average distance of 14000 km. Emissions and Energy Economy figures standardised to 3P WLTP.

**Stock ID: 47515**



Regent Car Court | Phone Sean 0276122217 - Natasha 0275363732 | Email sales@regentcars.co.nz  
100 & 167 Clyde Street, Invercargill 9810, New Zealand  
www.regentcars.co.nz



★★★★★  
4.72 | 818 reviews