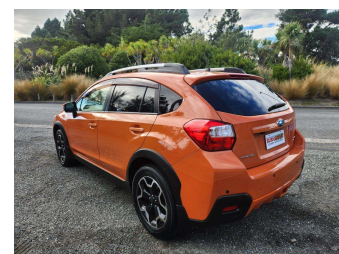
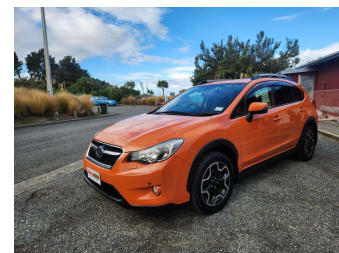
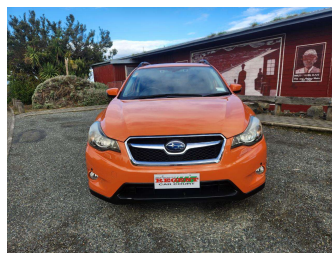


# 2014 Subaru XV 2.0i-L Eyesight



**Purchase Price** **\$12,990**  
Includes GST, Registration & Licensing

Finance may be available on this vehicle. Ask one of our friendly staff for more information.



Gain peace of mind with Mechanical Breakdown Insurance. **Ask us how.**



**Top features**

- » 3 Full Seat Belts In Rear
- » 6 Air Bags
- » ABS Braking
- » Alloy Wheels
- » Cam Chain
- » Emergency Brake Assist
- » Split Fold Down Rear Seats

Body Style  
**5 door, Hatchback**

Odometer  
**153,019 km**

Engine  
**2000 cc, Internal Combustion**

Fuel Type  
**Petrol**

Transmission  
**Automatic**

Wheels  
-

VIN  
**7AT0GF1XX26084580**

Interior  
**Black**

Safety



Based on 2025 UCSR rating for 12-16 models

Reg No.  
-

Ext Colour  
**Orange**

History  
-

Seats  
**5 seats, Leather**

CO2 Emissions  
**★★★★☆**  
**163 grams/km**

Energy Economy  
**★★★☆☆**


**Annual fuel cost of \$2,740**  
**7L per 100km**

Cost per year is an estimate based on petrol price of \$2.80 per litre and an average distance of 14000 km. Emissions and Energy Economy figures standardised to 3P WLTP.

**Stock ID: 47617**



Regent Car Court | Phone Sean 0276122217 - Natasha 0275363732 | Email sales@regentcars.co.nz  
100 & 167 Clyde Street, Invercargill 9810, New Zealand  
www.regentcars.co.nz



★★★★★  
4.73 | 863 reviews