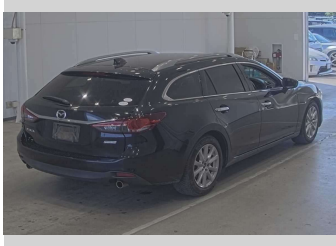


# 2013 Mazda Atenza 25S L package



### Purchase Price

**\$14,990**

Includes GST, Registration & Licensing

Finance may be available on this vehicle. Ask one of our friendly staff for more information.



Gain peace of mind with Mechanical Breakdown Insurance. **Ask us how.**



### Top features

- » 3 Full Seat Belts In R...
- » 6 Air Bags
- » ABS Braking
- » Alloy Wheels
- » Cam Chain
- » Child Seat Anchor Poin...
- » Cruise Control
- » Electronic Stability C...
- » Keyless Entry
- » Keyless Start
- » Remote Central Locking
- » Split Fold Down Rear S...

### Body Style

**5 door, Station Wagon**

### Odometer

**155,367 km**

### Engine

**2500 cc, Internal Combustion**

### Fuel Type

**Petrol**

### Transmission

**Automatic**

### Wheels

-

### VIN

-

### Interior

**Black, Leather**

### Safety



Based on 2025 UCSR rating for 12-23 models

### Reg No.

-

### Ext Colour

**Black**

### History

-

### Seats

**5 seats, Leather**

### CO2 Emissions

-

### Energy Economy

☆☆☆☆☆☆

**Annual fuel cost not available**

Energy Consumption unknown.

**Stock ID: 47579**



Regent Car Court | Phone Sean 0276122217 - Natasha 0275363732 | Email sales@regentcars.co.nz  
100 & 167 Clyde Street, Invercargill 9810, New Zealand  
www.regentcars.co.nz

