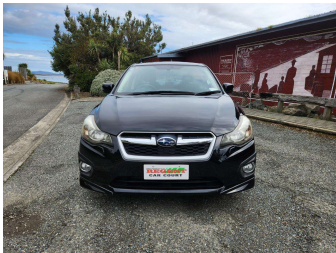


2014 Subaru Impreza G4 2.0i-S



Purchase Price

Includes GST, Registration & Licensing

\$12,990

Finance may be available on this vehicle. Ask one of our friendly staff for more information.



Gain peace of mind with Mechanical Breakdown Insurance. **Ask us how.**



Top features

- » 3 Full Seat Belts In R...
- » 6 Air Bags
- » ABS Braking
- » Cam Chain
- » CD Player
- » Child Seat Anchor Poin...
- » Electronic Stability C...
- » ISOFIX Child Seat Anch...
- » Keyless Entry
- » Keyless Start
- » Remote Central Locking
- » Split Fold Down Rear S...

Body Style

4 door, Sedan

Odometer

121,000 km

Engine

2000 cc, Internal Combustion

Fuel Type

Petrol

Transmission

Automatic

Wheels

-

VIN

7AT0GF09X25017260

Interior

Black

Safety



Based on 2024 UCSR rating for 12-16 models

Reg No.

-

Ext Colour

Black

History

-

Seats

5 seats, Cloth/Leather

CO2 Emissions

★★★★★☆☆

163 grams/km

Energy Economy

★★★☆☆☆☆

Annual fuel cost of \$2,740

7L per 100km

Cost per year is an estimate based on petrol price of \$2.80 per litre and an average distance of 14000 km. Emissions and Energy Economy figures standardised to 3P WLTP.

Stock ID: 47514



Regent Car Court | Phone Sean 0276122217 - Natasha 0275363732 | Email sales@regentcars.co.nz
100 & 167 Clyde Street, Invercargill 9810, New Zealand
www.regentcars.co.nz

