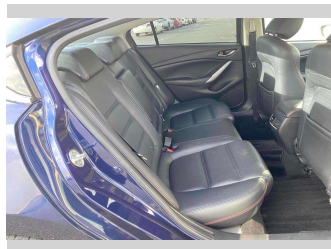
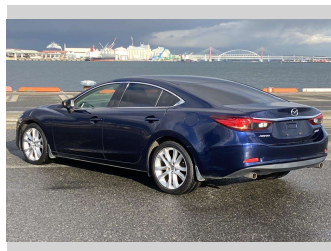



# 2013 Mazda Atenza 25S L package



**Purchase Price** **\$12,990**  
Includes GST, Registration & Licensing

Finance may be available on this vehicle. Ask one of our friendly staff for more information.



Gain peace of mind with Mechanical Breakdown Insurance. **Ask us how.**



**Top features**

- » 2 Air Bags
- » ABS Braking
- » Air Con
- » Alloy Wheels
- » Audio Control Steering...
- » Auto Lights
- » CD Player
- » Cruise Control
- » Cruise Control
- » ESC
- » Fog Lamps
- » Heated Seats
- » Idling Stop
- » Indicator Mirror
- » Keyless Entry
- » Keyless Start
- » Paddle Shift
- » Power Mirrors

Body Style  
**4 door, Sedan**

Odometer  
**185,258 km**

Engine  
**2500 cc, Internal Combustion**

Fuel Type  
**Petrol**

Transmission  
**Automatic**

Wheels  
-

VIN  
-

Interior  
**Black**

Safety  
-

Reg No.  
-

Ext Colour  
**Blue**

History  
**Ex-Overseas**

Seats  
**5 seats, Leather**


CO2 Emissions  
-

Energy Economy  
-

**Stock ID: 47280**



Regent Car Court | Phone 0276122217 | Email south@regentcars.co.nz  
167-169 Clyde Street, Invercargill 9810, New Zealand  
www.regentcars.co.nz



★★★★★  
4.71 | 681 reviews